



Paris Trip – Parent Information Evening

Tuesday 5th March



STAFF



GETTING THERE



THE HOSTEL



ITINERARY



WHAT TO PACK



EXPECTATIONS



DROP-OFF &
COLLECTION
ARRANGEMENTS



QUESTIONS



Staff on the trip



Miss Clark



Mr Scorey



Mr Thompson



Miss Fisher



Miss Goddard



Dr Smith

The Itinerary

- Pupils will have a meeting on 8th March in school with their group leader to discuss expectations and what to expect on the trip.
- Groups have been based on friendship groups.
- Please make sure that your child knows the importance of having a good breakfast each day at the hotel and that they eat something nourishing when they grab something to eat during the day/evening...it is a very active trip with lots of walking and they need the fuel to be able to enjoy themselves.



Meeting Point Picadilly Station, Manchester
Friday 15th March 8.30am at the very latest.



Walk from Euston to St Pancrass



Arrive Gare du Nord in Paris

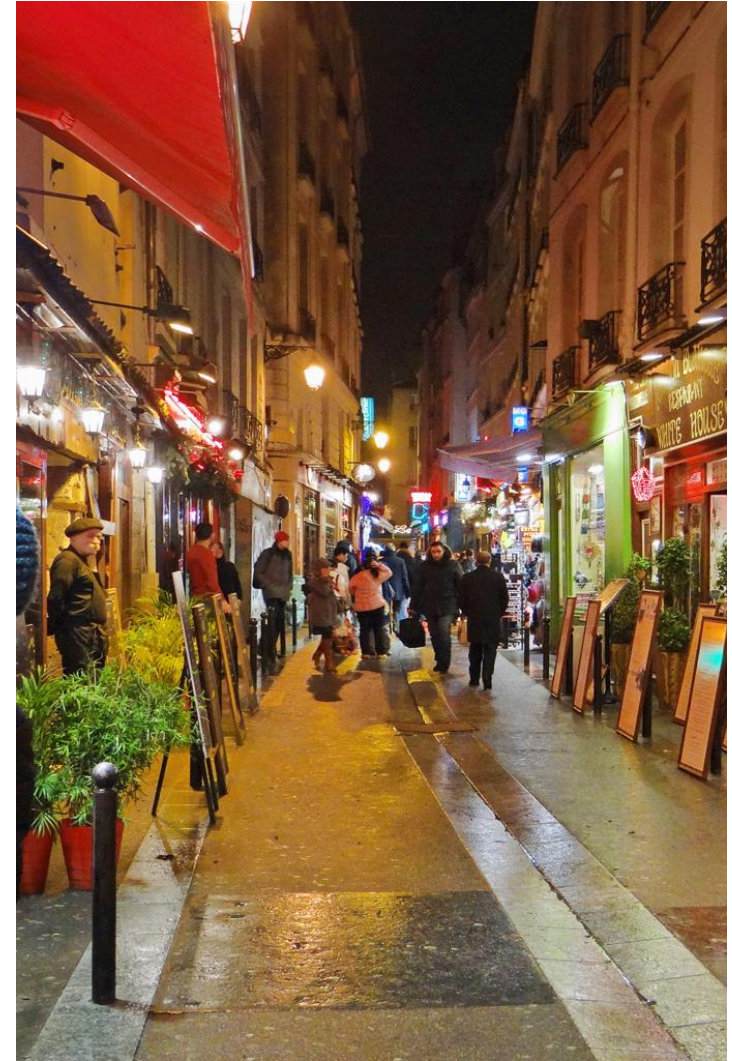
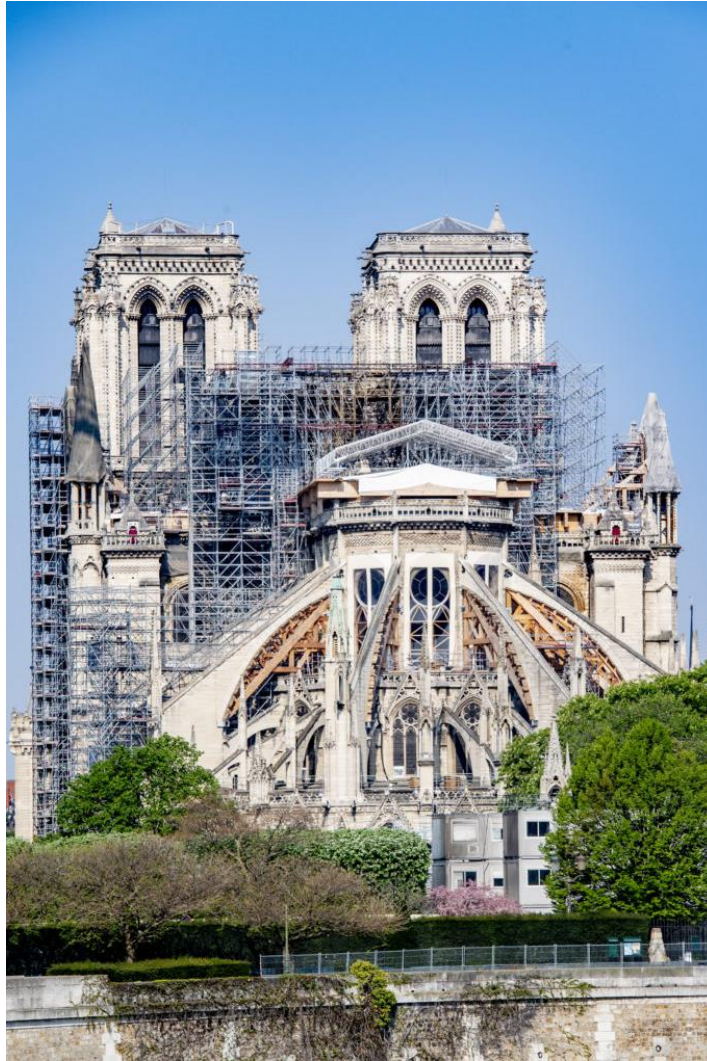
Travel by Métro to Centre Kellerman

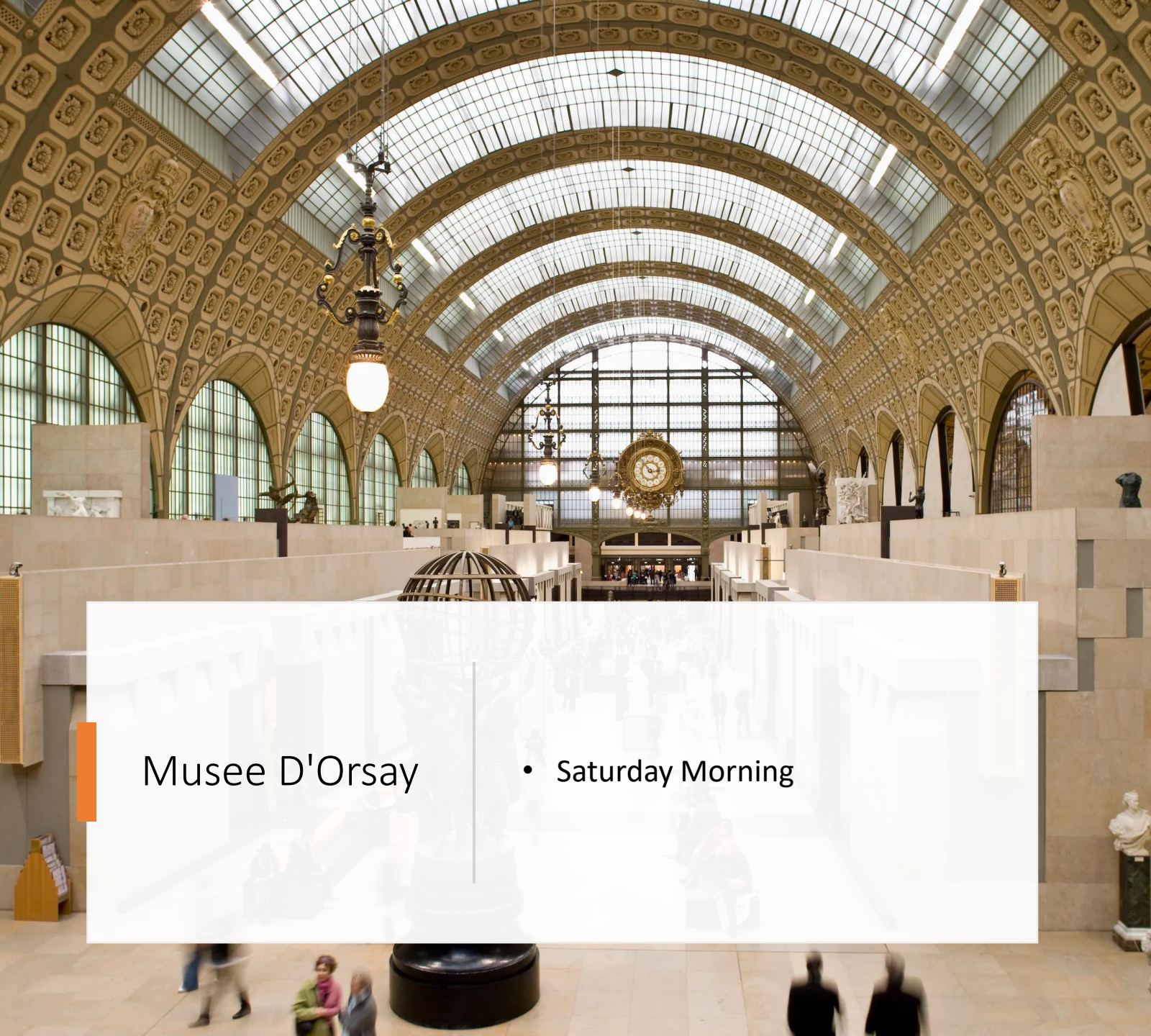
Small cabin bags should be on wheels or light enough to carry as we travel through the city.

Accommodation



Friday Evening





Musee D'Orsay

• Saturday Morning



Saturday Lunchtime





Saturday Afternoon



- Saturday Evening



Sunday



Monday
morning-
Return to
Gare du
Nord for the
journey
home.

What to pack

- A bag or case which is **easy to carry**. A case on wheels is especially useful as we will travel across Paris via Metro once we arrive!

Bags should contain:

- A quick change of clothes for the Friday evening if desired
- 3 changes of clothing for the Saturday, Sunday and Monday (there will be no opportunity to change during the day on any day)
- a warm waterproof coat (your child will be spending much of the time outside and the weather could be wet, and even on sunny Spring days it is cold at night)
- comfortable footwear – we pack in a lot of steps!!
- toiletries for shower/bath toothpaste, toothbrush, hairbrush/comb, hairdryer/straighteners if required, (please remember an adaptor)
- nightwear
- money for all meals except breakfast and for souvenirs – we recommend £120-150, mostly in Euros
- mobile phone charger (please remember an EU adaptor)

Behaviour

- Safety is number one consideration – listen to instructions from group leader and follow them. Be very mindful of traffic and pickpockets.
- Free time – groups of 3+
- Appropriate behaviour in public places including on transport
- No phone misuse – any inappropriate phone use will result in confiscation of phones
- Alcohol, cigarettes/vapes and drugs will be dealt with very severely and could result in a child being sent home
- Students are only in rooms to sleep – once back in the accommodation they must stay in their own room and cannot wander the corridors.
- Lights out time = quiet time. Phones will be confiscated if rooms are noisy.
- Sanctions include phone calls home, change of group, constant supervision

Behaviour Continued

- please talk through the behaviour expectations with your child before they go
- we are representing Blue Coat in the wide world and have high expectations – we usually receive excellent feedback from members of the public
- staff are giving up their free time for a full weekend – they will look after your children as if they were their own and there are 55 of them – it's very tiring!
- remind your child to listen, follow instructions and be punctual – safety is at the heart of the rules

Travel

Departure Day

- Students should meet us at Manchester Piccadilly train station, in the main downstairs concourse near the departures boards, at 8.30am on Friday 15^h March. Please check in with your child's group leader.
- If due to work commitments you would like to drop your child earlier, a member of staff will be in the café area on the first floor from 8am and your child will be able to wait there.

Arrival Home

- Please meet us as we come off the platform at Piccadilly. We cannot let your child go without seeing the person collecting them at the meeting point. Please check them out with their group leader. The train is due in at 17.05. Students will be able to contact you with updates on the way home.



Passports

Please send passports into the main office with your child by Monday 11th at the absolute latest.

They must be signed by the student.

This presentation will be made available on
the school website next week

QUESTIONS